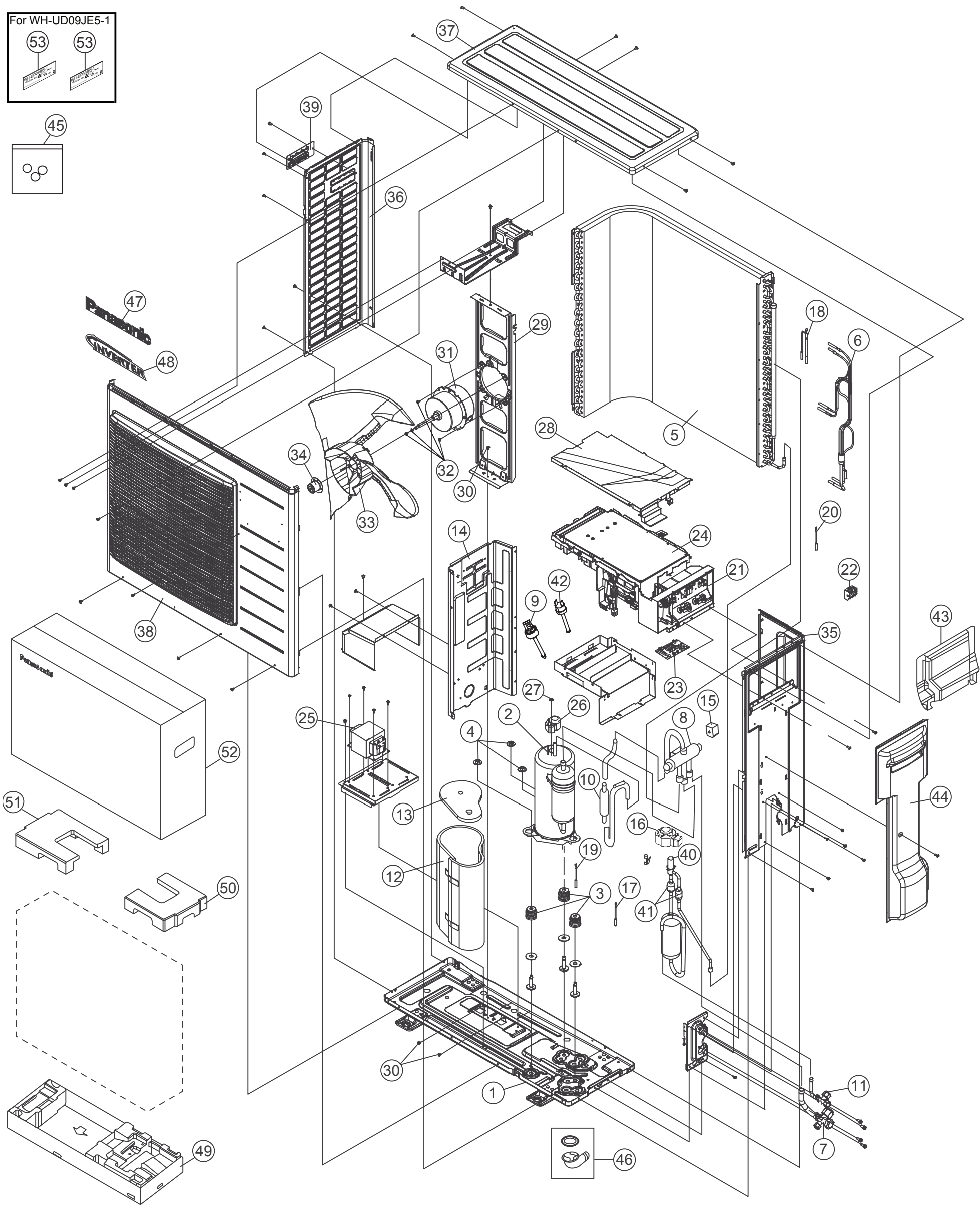


21.2.3 WH-UD09JE5-1



**Note:**  
The above exploded view is for the purpose of parts disassembly and replacement.  
The non-numbered parts are not kept as standard service parts.

SAFETY	REF. NO.	DESCRIPTION & NAME	QTY.	WH-UD09JE5-1	REMARK
	1	BASE PAN ASS'Y	1	ACXD52K03140	
	2	COMPRESSOR	1	9KD240XBB21	
	3	BUSHING - COMPRESSOR MOUNT	3	CWH50055	
	4	NUT - COMPRESSOR MOUNT	3	CWH561049	
	5	CONDENSER	1	ACXB32C16550	
	6	TUBE ASSY (CAP. TUBE)	1	ACXT07K08290	
	7	3 - WAYS VALVE (GAS)	1	CWB011363	
	8	4 - WAYS VALVE	1	CWB001026J	
	9	HIGH PRESSURE SENSOR (CN-HPS)	1	CWA501463	
	10	DISCHARGE MUFFLER (4 WAY VALVE)	1	CWB121013	
	11	2 - WAYS VALVE (LIQUID)	1	CWB021464	
	12	SOUND PROOF MATERIAL	1	ACXG30-10090	
	13	SOUND PROOF MATERIAL (COMP TOP)	1	CWG302484	
	14	SOUND PROOF BOARD	1	CWH151197	
	15	V - COIL COMPLETE (4 - WAY VALVE)	1	CWA43C2169J	
	16	V - COIL COMPLETE (EXPANSION VALVE)	1	CWA43C2342	
	17	SENSOR - COMPLETE - COMP TEMP	1	CWA50C2185	
	18	SENSOR - COMPLETE - AIR & PIPE TEMP	1	CWA50C2517	
	19	SENSOR - COMPLETE - DISC TEMP	1	CWA50C2722	
	20	SENSOR - COMPLETE - EVA EXIT TEMP	1	ACXA50C14960	
	21	CONTROL BOARD CASING	1	CWH102360	
	22	TERMINAL BOARD ASS'Y (1, 2, 3)	1	CWA28K1076J	
	23	ELECTRONIC CONTROLLER - NF	1	ACXA73-31180	
	24	ELECTRONIC CONTROLLER (MAIN)	1	ACXA73-C58250R	
	25	REACTOR	1	G0C203J00008	
	26	TERMINAL COVER	1	CWH171039A	
	27	NUT - TERMINAL COVER	1	CWH7080300J	
	28	CONTROL BOARD COVER	1	CWH131333	
	29	FAN MOTOR BRACKET	1	CWD541127	
	30	SCREW - FAN MOTOR BRACKET	3	CWH551217	
	31	FAN MOTOR	1	EHDS80C60AC	
	32	SCREW - FAN MOTOR MOUNT	4	CWH551323	
	33	PROPELLER FAN ASSY	1	CWH00K1006	
	34	NUT - PROPELLER FAN	1	CWH561092	
	35	CABINET SIDE PLATE	1	CWE041799A	
	36	CABINET SIDE PLATE	1	CWE041585A	
	37	CABINET TOP PLATE	1	CWE031083A	
	38	CABINET FRONT PLATE ASSY	1	CWE06K1063	
	39	HANDLE	1	CWE161010	
	40	EXPANSION VALVE	1	CWB051029	
	41	STRAINER	2	CWB111063	

SAFETY	REF. NO.	DESCRIPTION & NAME	QTY.	WH-UD09JE5-1	REMARK
	42	HIGH PRESSURE SWITCH	1	CWA101013	
	43	PLATE - CONTROL BOARD COVER	1	CWH131332	
	44	CONTROL BOARD COVER - COMPLETE	1	CWH13C1185	
	45	ACCESSORY - COMPLETE	1	ACXH82C09830	
	46	ACCESSORY CO. (DRAIN ELBOW)	1	CWG87C900	
	47	PANASONIC BADGE	1	CWE373439	
	48	INVERTER BADGE	1	CWE373441	
	49	BASE BOARD - COMPLETE	1	CWG62C1081	
	50	SHOCK ABSORBER (TOP RIGHT)	1	CWG712879	
	51	SHOCK ABSORBER (TOP LEFT)	1	CWG712880	
	52	C.C. CASE	1	ACXG50-48440	
	53	MODEL LABEL	2	ACXF85-30370	

**Note:**

- All parts are supplied from PAPAMY, Malaysia (Vendor Code: 00029488).
- “O” marked parts are recommended to be kept in stock.