



CONFIDENTIAL

THERMA VTM **BACKUP HEATER** **SERVICE MANUAL** **(Exploded View)**

AIR-TO-WATER HEAT PUMP
HA061C E1
HA063C E1

CAUTION

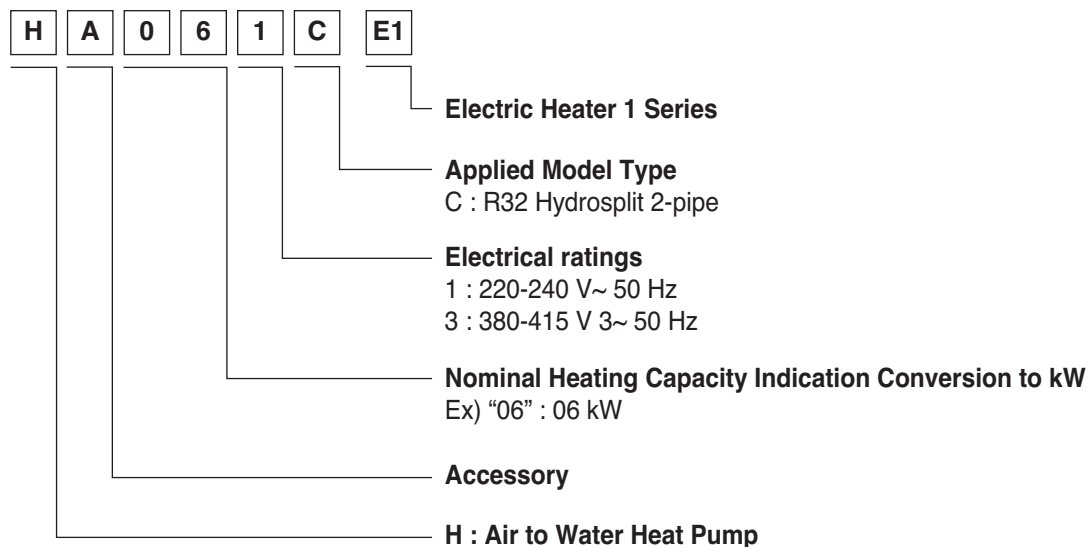
Before Servicing the unit, read the safety precautions in General SVC manual.

Only for authorized service personnel.

The appliance shall be disconnected from its power source during service and when replacing parts.

1. Model Information

Model number nomenclature



Model name and related information

Capacity (kW)	Power Source
6	380-415 V 3N~ 50 Hz
6	220-240 V ~ 50 Hz

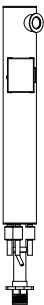



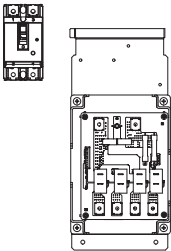
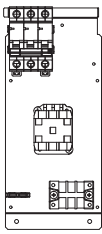


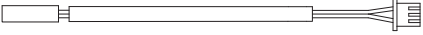
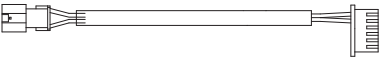
2. Specification

Backup Heater		Model	
		AHEH066C [HA061C E1]	AHEH068C [HA063C E1]
Type	-	Sheath	Sheath
Power Supply	V, Ø, Hz	220 – 240, 1, 50	380 – 415, 3, 50
Power Connection Wiring	-	L1, N, Earth	R, S, T, N, Earth
Number of Heating coil	EA	2	3
Capacity Combination	kW	3 + 3	2 + 2 + 2
Operation	-	Automatic	Automatic
Heating Steps	Step	1	1
Net Dimensions(W x H x D)	mm	-	-
Shipping Dimensions(W x H x D)	mm	738 x 293 x 309	738 x 293 x 309
Net Weight	kg	4.3	4.7
Shipping Weight	kg	5.8	6.1
Current(Rated)	A	24	8.7
Power Supply Cable (H07RN-F)	mm ² x cores	6.0 x 3	2.5 x 5
(Included Earth)			
Communication Cable(H07RN-F)	mm ² x cores	-	-
Circuit Breaker(ELCB)	A	40	20

Note

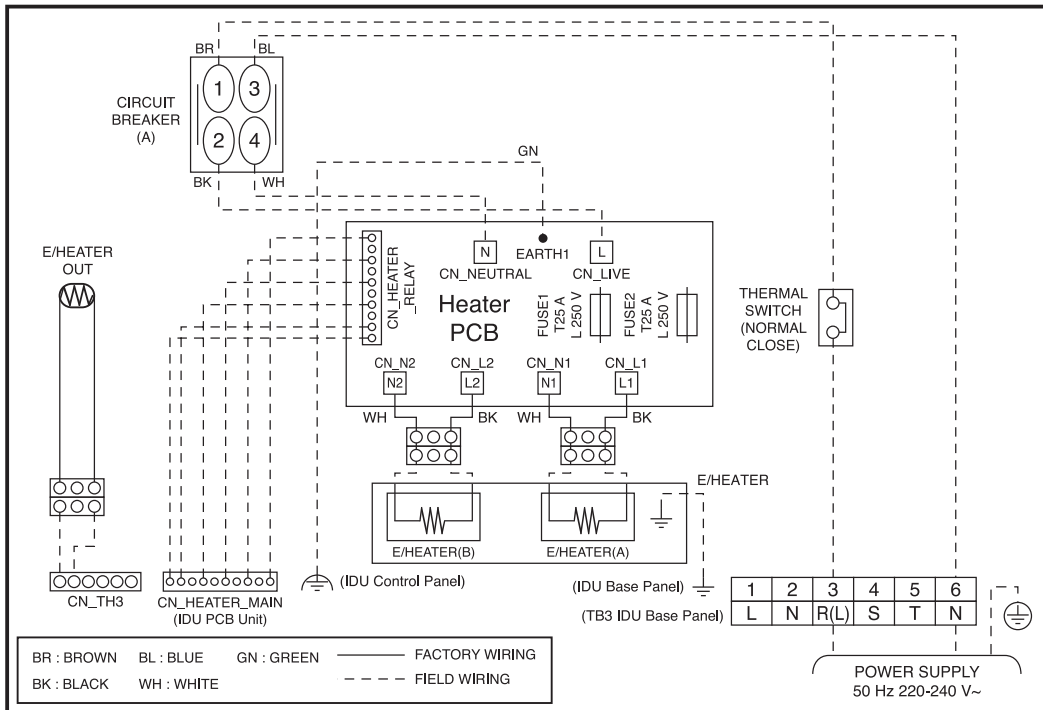
1. The specification may be subject to change without prior notice for purpose of improvement.

3. External Appearance

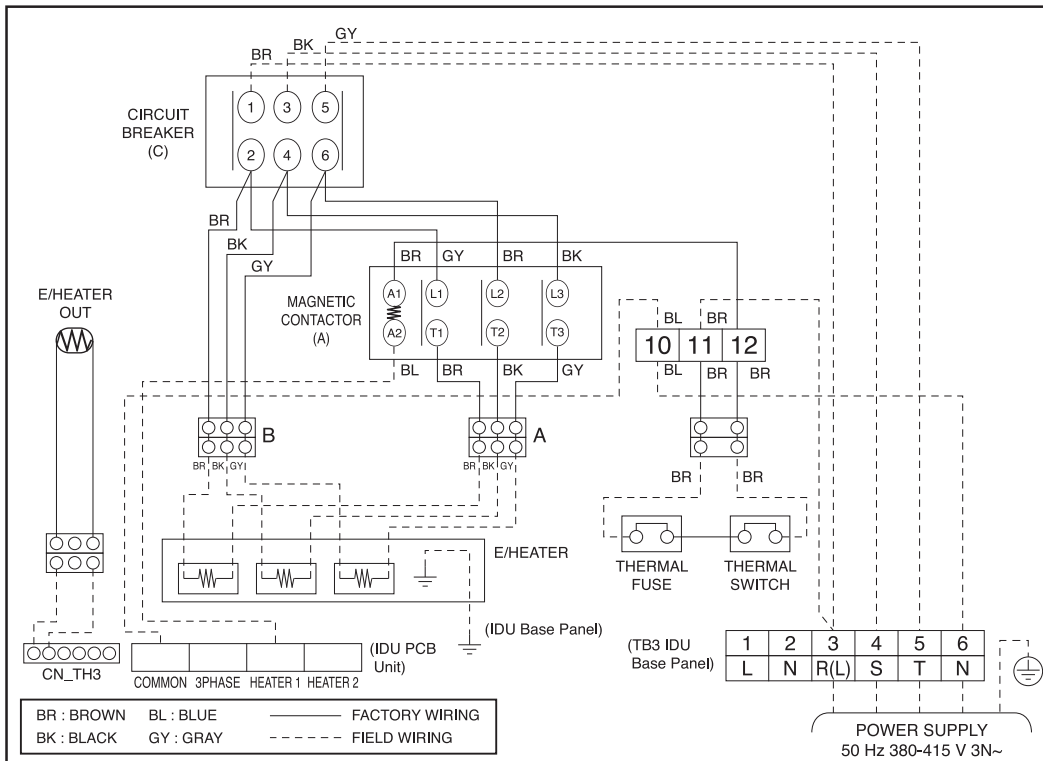
Item	Image		Quantity
Backup Heater	1Ø	3Ø	1
			
Installation Manual			1
Owner's / Installation Manual			1
Control Panel	1Ø	3Ø	1
			
Earth Screw			1
Screw			2
Temperature Sensor			1
Middle Link Harness			1

4. Wiring Diagrams

1Ø 6 kW

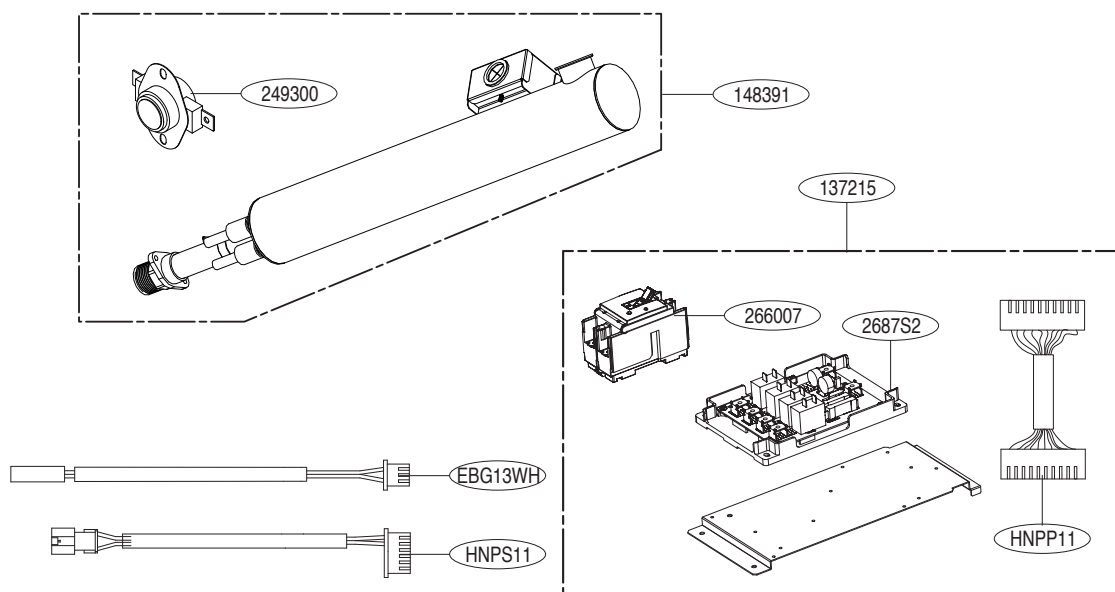


3Ø 6 kW



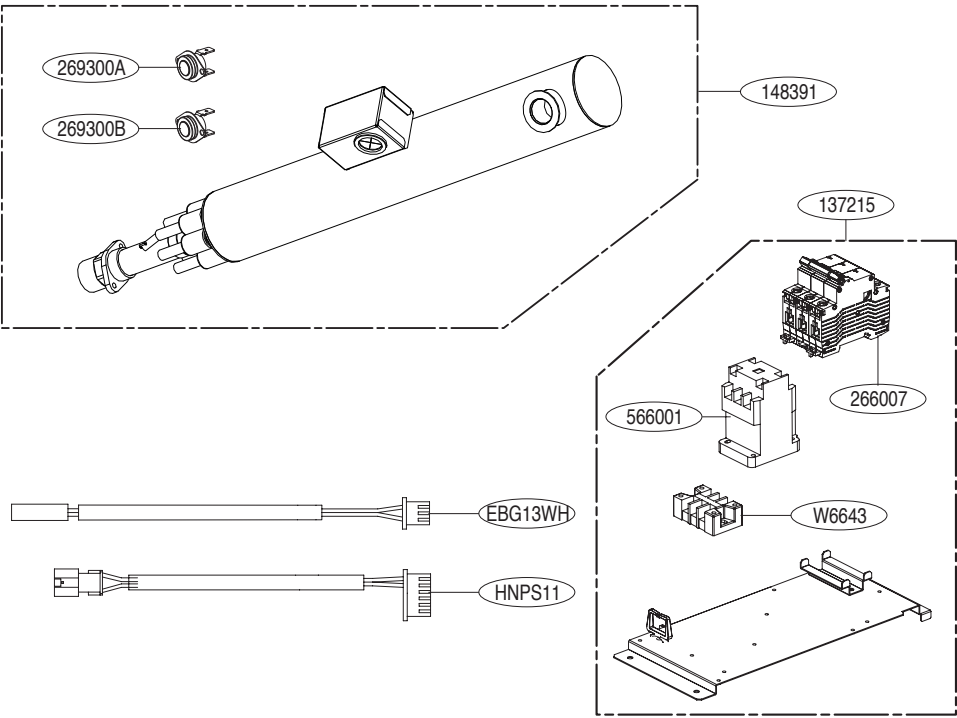
5. Exploded View

10 6 kW



Location No.	Description	Information	Etc.
EBG13WH	Thermistor Assembly,NTC	Water Out (E/HTR)	CN_TH3
HNPS11	Harness,Single		

3Ø 6 kW



Location No.	Description	Information	Etc.
EBG13WH	Thermistor Assembly,NTC	Water Out (E/HTR)	CN_TH3
HNPS11	Harness,Single		



P/NO : MFL68681923