

A new air conditioner designed to seamlessly integrate with your senses and interior.

LG ARTCOOL™ Gallery

Premium / Special



Key Feature

Explore the ARTCOOL 2nd Evolution Gallery – an interior masterpiece.

Art Display (27" Full HD LCD)

Experience a 27" Full HD LCD display incorporated into the air conditioning unit. Customize the screen to suit your mood and preferences.



Wood Frame Design

Featuring a modern and luxurious design that seamlessly harmonizes with any space.



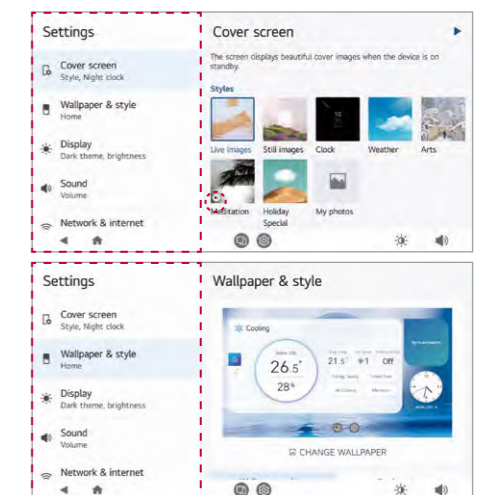
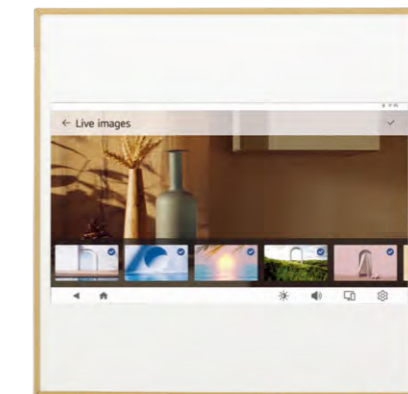
INTERNATIONAL DESIGN EXCELLENCE AWARDS

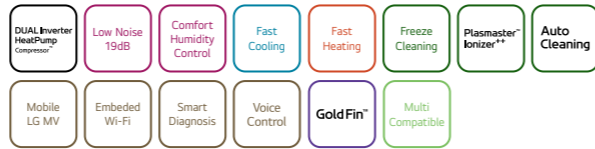
2023 Finalist
ARTCOOL Gallery

The ARTCOOL Gallery has Excellence Design Awards from the IDEA. (International design excellence awards)

Create the interior settings using the LG ThinQ App

Choose up to 20 photos from your phone and send them to Look at Me through the ThinQ app, allowing you to view them on the air conditioner.





LG participates in the ECP programme for EUROVENT AC program. Check ongoing validity of certification : www.eurovent-certification.com

Single Combination

UNIT				9K	12K
INDOOR				A09GA1.NSE	A12GA1.NSE
Capacity	Cooling	Min. / Rated / Max.	kW	0.89 / 2.50 / 3.70	0.89 / 3.50 / 4.04
	Heating	Min. / Rated / Max.	kW	0.89 / 3.30 / 4.10	0.89 / 4.00 / 4.70
	Heating -7°C	Rated	kW	2.60	3.20
Power Input	Cooling / Heating	Rated	W	600 / 808	1,020 / 1,078
EER			W/W	4.17	3.43
S.E.E.R.				7.2	6.9
P design C			kW	2.5	3.5
COP			W/W	4.08	3.71
S.C.O.P		(Average / Warmer)		4.3 / 4.9	4.3 / 4.9
P design H (Average / Warmer)			kW	2.7 / 1.4	2.7 / 1.4
Energy Label (A+++ to D Scale)	Cooling			A++	A++
	Heating	(Average / Warmer)		A+ / A++	A+ / A++
Annual Energy Consumption	Cooling		kWh	121	177
	Heating	(Average / Warmer)	kWh	879 / 373	879 / 373
Sound Pressure*	Cooling	S / L / M / H	dB(A)	20 / 28 / 36 / 42	20 / 28 / 36 / 42
	Heating	L / M / H	dB(A)	28 / 36 / 42	28 / 36 / 42
Sound Power	Cooling		dB(A)	60	60
Air Flow Rate	Cooling	S / L / M / H / Max. (Power)	m³/min	3 / 6 / 8 / 10 / 12	3 / 6 / 8 / 10 / 12
	Heating	L / M / H	m³/min	6 / 8 / 10	6 / 8 / 10
Dehumidification Rate			l/h	1.1	1.3
Running Current	Cooling	Min. / Rated / Max.	A	1.1 / 3.0 / 6.0	1.1 / 4.6 / 6.2
	Heating	Min. / Rated / Max.	A	1.1 / 3.7 / 7.2	1.1 / 4.8 / 7.2
Starting Current	Cooling / Heating	Rated	A	3.0 / 3.7	4.6 / 4.8
Power Supply			Ø / V / Hz	1 / 220-240 / 50	1 / 220-240 / 50
Circuit Breaker			A	20	20
Power Supply Cable			N x mm²	3 x 1.0	3 x 1.0
Power & Transmission Cable			N x mm²	4 x 1.0 (Including Earth)	4 x 1.0 (Including Earth)
Dimension			mm	652 x 652 x 158	652 x 652 x 158
Net Weight			kg	20	20
Fan Motor Output			W	32.7	32.7
OUTDOOR				A09GA1.U18	A12GA1.U18
Operation Range	Cooling	Min. / Max.	°C DB	-15 / 48	-15 / 48
	Heating	Min. / Max.	°C DB	-15 / 24	-15 / 24
Sound Pressure*	Cooling / Heating	High	dB(A)	50 / 53	50 / 53
Sound Power	Cooling	High	dB(A)	65	65
Air Flow Rate		High	m³/min	35	35
Piping	Liquid (ODU / IDU)	Min. / Max.	m	3 / 20	3 / 20
	Elevation (ODU / IDU)	Min. / Max.	m	10	10
Piping Connection	Liquid	OD (Outside)	mm (inch)	6.35 (1/4)	6.35 (1/4)
	Gas	OD (Outside)	mm (inch)	9.52 (3/8)	9.52 (3/8)
Drain Hose Size		OD (Outside)	mm (inch)	21.5 (27/32)	21.5 (27/32)
Refrigerant	Type			R32	R32
	Charge at 7.5m		kg	0.800	0.800
	Additional Charge		t-CO ₂ eq	0.540	0.540
	GWP		g/m	20	20
Fan Motor Output			W	675	675
Compressor Type				43	43
Compressor Type				Twin Rotary	Twin Rotary
Net Weight			kg	33.4	33.4
Dimension			mm	770 x 545 x 288	770 x 545 x 288
ACCESSORIES & OTHERS					
Multi Compatible				Y	Y
PI 485				Y	Y
Dry Contact				Y	Y
Wired Remote Controller				Y	Y

Preliminary Data Only

* : Sound Pressure is not a value declared on Eurovent Program.
 ※ This product contains Fluorinated greenhouse gases (R32).
 ※ S : Sleep / L : Low / M : Medium / H : High
 ※ GWP : Global warming potential
 ※ t-CO₂eq : F-gas(kg)*GWP/1000
 ※ For our policy of continuous product improvement, specification, design and feature are subject to change without prior notice.
 ※ Y : Available or Applied / - : Not Available or Not Applied



LG participates in the ECP programme for EUROVENT AC program. Check ongoing validity of certification : www.eurovent-certification.com

Single Combination

UNIT				9K	12K
INDOOR				A09GA2.NSE	A12GA2.NSE
Capacity	Cooling	Min. / Rated / Max.	kW	0.89 / 2.50 / 3.70	0.89 / 3.50 / 4.04
	Heating	Min. / Rated / Max.	kW	0.89 / 3.30 / 4.10	0.89 / 4.00 / 4.70
	Heating -7°C	Rated	kW	2.60	3.20
Power Input	Cooling / Heating	Rated	W	600 / 808	1,020 / 1,078
EER			W/W	4.17	3.43
S.E.E.R.				7.2	6.9
P design C			kW	2.5	3.5
COP			W/W	4.08	3.71
S.C.O.P		(Average / Warmer)		4.3 / 4.9	4.3 / 4.9
P design H (Average / Warmer)			kW	2.7 / 1.4	2.7 / 1.4
Energy Label (A+++ to D Scale)	Cooling			A++	A++
	Heating	(Average / Warmer)		A+ / A++	A+ / A++
Annual Energy Consumption	Cooling		kWh	121	177
	Heating	(Average / Warmer)	kWh	879 / 373	879 / 373
Sound Pressure*	Cooling	S / L / M / H	dB(A)	20 / 28 / 36 / 42	20 / 28 / 36 / 42
	Heating	L / M / H	dB(A)	28 / 36 / 42	28 / 36 / 42
Sound Power	Cooling		dB(A)	60	60
Air Flow Rate	Cooling	S / L / M / H / Max. (Power)	m³/min	3 / 6 / 8 / 10 / 12	3 / 6 / 8 / 10 / 12
	Heating	L / M / H	m³/min	6 / 8 / 10	6 / 8 / 10
Dehumidification Rate			l/h	1.1	1.3
Running Current	Cooling	Min. / Rated / Max.	A	1.1 / 3.0 / 6.0	1.1 / 4.6 / 6.2
	Heating	Min. / Rated / Max.	A	1.1 / 3.7 / 7.2	1.1 / 4.8 / 7.2
Starting Current	Cooling / Heating	Rated	A	3.0 / 3.7	4.6 / 4.8
Power Supply			Ø / V / Hz	1 / 220-240 / 50	1 / 220-240 / 50
Circuit Breaker			A	20	20
Power Supply Cable			N x mm²	3 x 1.0	3 x 1.0
Power & Transmission Cable			N x mm²	4 x 1.0 (Including Earth)	4 x 1.0 (Including Earth)
Dimension			mm	652 x 652 x 158	652 x 652 x 158
Net Weight			kg	20	20
Fan Motor Output			W	32.7	32.7
OUTDOOR				A09GA2.U18	A12GA2.U18
Operation Range	Cooling	Min. / Max.	°C DB	-15 / 48	-15 / 48
	Heating	Min. / Max.	°C DB	-15 / 24	-15 / 24
Sound Pressure*	Cooling / Heating	High	dB(A)	50 / 53	50 / 53
Sound Power	Cooling	High	dB(A)	65	65
Air Flow Rate		High	m³/min	35	35
Piping	Liquid (ODU / IDU)	Min. / Max.	m	3 / 20	3 / 20
	Elevation (ODU / IDU)	Min. / Max.	m	10	10
Piping Connection	Liquid	OD (Outside)	mm (inch)	6.35 (1/4)	6.35 (1/4)
	Gas	OD (Outside)	mm (inch)	9.52 (3/8)	9.52 (3/8)
Drain Hose Size		OD (Outside)	mm (inch)	21.5 (27/32)	21.5 (27/32)
Refrigerant	Type			R32	R32
	Charge at 7.5m		kg	0.800	0.800
	Additional Charge		t-CO ₂ eq	0.540	0.540
	GWP		g/m	20	20
Fan Motor Output			W	675	675
Compressor Type				43	43
Compressor Type				Twin Rotary	Twin Rotary
Net Weight			kg	33.4	33.4
Dimension			mm	770 x 545 x 288	770 x 545 x 288
ACCESSORIES & OTHERS					
Multi Compatible				Y	Y
PI 485				Y	Y
Dry Contact				Y	Y
Wired Remote Controller				Y	Y

Preliminary Data Only

* : Sound Pressure is not a value declared on Eurovent Program.
 ※ This product contains Fluorinated greenhouse gases (R32).
 ※ S : Sleep / L : Low / M : Medium / H : High
 ※ GWP : Global warming potential
 ※ t-CO₂eq : F-gas(kg)*GWP/1000
 ※ For our policy of continuous product improvement, specification, design and feature are subject to change without prior notice.
 ※ Y : Available or Applied / - : Not Available or Not Applied