

# INSTALLATION & OWNERS MANUAL IR RECEIVER



Please read this installation manual completely before installing the product.

- Installation work must be performed in accordance with the national wiring standards by authorized personnel only.
- Please retain this installation manual for future reference after reading it thoroughly.

## TIPS FOR SAVING ENERGY

Here are some tips that will help you minimize the power consumption when you use the air conditioner. You can use your air conditioner more efficiently by following to the instructions below:

- Do not cool excessively indoors. This may be harmful for your health and may consume more electricity.
- Block sunlight with blinds or curtains while you are operating the air conditioner.
- Keep doors or windows closed tightly while you are operating the air conditioner.
- Adjust the direction of the air flow vertically or horizontally to circulate indoor air.
- Speed up the fan to cool or warm indoor air quickly, in a short period of time.
- Open windows regularly for ventilation as the indoor air quality may deteriorate if the air conditioner is used for many hours.
- Clean the air filter once every 2 weeks. Dust and impurities collected in the air filter may block the air flow or weaken the cooling / dehumidifying functions.

For your records

Staple your receipt to this page in case you need it to prove the date of purchase or for warranty purposes. Write the model number and the serial number here:

Model number : \_\_\_\_\_

Serial number : \_\_\_\_\_

You can find them on a label on the side of each unit.

Dealer's name : \_\_\_\_\_

Date of purchase : \_\_\_\_\_

## IMPORTANT SAFETY INSTRUCTIONS

**READ ALL INSTRUCTIONS BEFORE USING THE APPLIANCE.**  
Always comply with the following precautions to avoid dangerous situations and ensure peak performance of your product

- ⚠ WARNING**  
It can result in serious injury or death when the directions are ignored
- ⚠ CAUTION**  
It can result in minor injury or product damage when the directions are ignored
- ⚠ WARNING**
- Installation or repairs made by unqualified persons can result in hazards to you and others.
  - Installation work must be performed in accordance with the national wiring standards by authorized personnel only.
  - The information contained in the manual is intended for use by a qualified service technician familiar with safety procedures and equipped with the proper tools and test instruments.
  - Failure to carefully read and follow all instructions in this manual can result in equipment malfunction, property damage, personal injury and/or death.

- Installation**
- Do not supply power to the unit until all wiring are completed or reconnected and checked. Or else it may cause electric shock.
  - Keep hands out of products when power is connected to equipment. It will cause fire, electric shock, explosion, injury or breakdown.
  - Be sure to request to the service center or installation specialty store when installing products. Or else it may cause fire or electric shock or explosion or injury.
  - Request to the service center or installation specialty store when reinstalling the installed product to avoid cause fire or electric shock or explosion or injury.
  - Do not disassemble, fix, and modify products randomly. It will cause fire or electric shock.

- In-use**
- Do not place flammable stuffs close to the product. It will cause fire.
  - Do not allow water to run into the product. It will cause electric shock or breakdown.
  - Do not give the shock to the product. It will cause breakdown when giving the shock to the product.
  - Request to the service center or installation specialty store when the product becomes wet. It will cause fire or electric shock.
  - Do not give the shock using sharp and pointed objects. It will cause breakdown by damaging parts.

- ⚠ CAUTION**
- In-use**
- Do not clean using the powerful detergent like solvent but use soft cloths. It will cause fire or product deformation.
  - Do not press the screen using powerful pressure or select two buttons. It will cause product breakdown or malfunction.
  - Do not touch or pull the lead wire with wet hands. It will cause product breakdown or electric shock.



## INTRODUCTION

### Symbols used in this Manual

- ⚠ This symbol alerts you to the risk of electric shock.
- ⚠ This symbol alerts you to hazards that may cause harm to the air conditioner.
- ❗ This symbol indicates special notes.

### Installation Parts

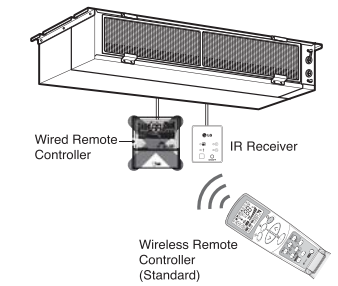
Name	Quantity	Shape
Top Case + PCB + Harness	1 EA	
Bottom Case	1 EA	
Screw	2 EA	
Installation Manual	1 EA	

### Installation Tools

Figure	Name
	Screw Driver

### Installation Map

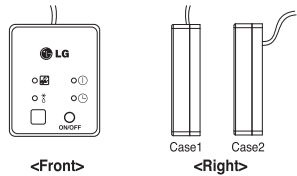
- ⚠ WARNING**  
Do not install both the IR Receiver and Wired Remote Controller. This may cause malfunctions.



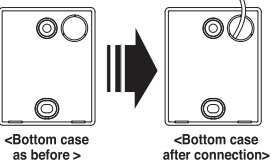
## INSTALLATION

### Connecting Harness

- 1 Choose the connecting type as indicated Case1 and Case2. In Case 2, connect the cable through the knock-out hole on the rear side of the bottom case.



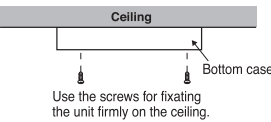
- ❗ NOTE**  
In Case 2, the diameter of the hole on the ceiling should be smaller than 18mm to prevent it from being shown.



- 2 Connect the IR receiver cable to the CN-DISPLAY connector of main PCB Assembly.

### Fixing on the ceiling

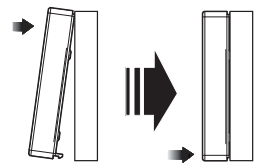
- 1 Fix the rear side of the installation board with the screw. Check the mark Up & Down on bottom case inside.



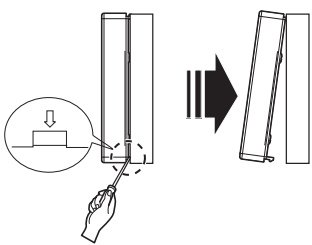
- ⚠ WARNING**  
Do not install the IR Receiver inside the ceiling. It is not a ceiling concealed type.



- 2 Now attach the IR PCB Assembly at the rear side of installation board.

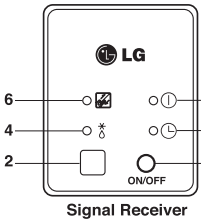


When disassemble the IR receiver from the bottom case, use a driver as shown in the picture and insert it into the hole as indicated with the arrow mark. And when you pull the driver in the front direction, the IR receiver will be separated.



- ⚠ WARNING**  
Do not pull a driver too strongly. Or else it can touch and hurt the IR PCB.

## ADMINISTRATION GUIDE

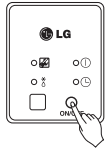


### Operation of Indication Lamps

- 1 **Emergency Operation button** :Turns the indoor unit on or off even when remote control is not working.
- 2 **Signal Detector** : Receives the signal from remote control
- 3 **Timer lamp (Green)** : Lights up during the timer operation.
- 4 **Hotstart lamp (Orange)** : Lights up during the pre-heating operation, defrost operation as well as latent heat removal operation in heat mode. Available only for the heat pump models, not cooling only models.
- 5 **System On/Off lamp (Red)** : Lights up during system controller operation.
- 6 **Filter Sign lamp (Green)** : Lights up after 2,400 hours from the time of first power on operation.

### Test Run Mode

After installing the product, you must run a Test Run mode. Press the Emergency Operation button for 5 seconds, until the LED flickers. Then the indoor unit, duct runs cooling mode for 18 minutes, where the desired temperature is 18 °C and the wind strength is high.



### Display

- 1 When receiving signals from the wireless remote controller, System On/Off LED – No.5 LED flickers once.
- 2 When receiving signals in Locking mode on all or each of indoor units , System On/Off LED flickers 5 times.

Example condition	System On/Off LED Operation
Receive signals in operation-off	Once flickering
Press Forced Operation button in central controller locking mode	5 times flickering

- \* The signal of canceling Auxiliary heater mode makes System On/Off LED flicker twice.
- \* The signal of starting Wifi AP mode makes Hotstart LED flicker once for 1 second.

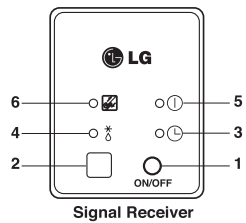
### Self-diagnosis Function

#### Error Indicator

- This function indicates the types of failure in self-diagnosis and occurrence of failure for air condition.
- The error number will be displayed on wired remote controller as well as the IR receiver.
- The expression related with error number is tabulated in the table of indoor unit manual.
- If more than two troubles occur simultaneously, lower number of error code will be displayed first.
- If the cause of error is removed, the error display will be stopped automatically.

#### Error Display

- Each of three LEDs – No.3, 5, 6 indicates error number.



Error code	LED Display Operation		
	No.3	No.6	No.5
05	-	-	5 times flickering
194	Once flickering	9 times flickering	4 times flickering

## TROUBLESHOOTING GUIDE

Please first check the items below for troubleshooting before consulting a service center.

Symptoms	Check-up	Management
Abnormal operating conditions	Is air-conditioner's power on?	• Please check up circuit breaker.
	Are air-conditioner and accessory properly connected with cable?	• Please connect air-conditioner and IR receiver cable.
	Is IR receiver's LED flicking when using wireless remote controller?	• Please connect air-conditioner and IR receiver cable. • Please check the battery of a wireless remote controller. • Please check the distance or obstacle between wireless remote controller and IR receiver.
It doesn't operate reservation.	Did you correctly setup time?	• Please set up current time correctly.
	Did you correctly make a reservation?	• Please set up again referring to the manual.
It doesn't re-release cool wind.	Is desired temperature setup lower than current temperature?	• Please set up desired temperature lower than current temperature.

## - MEMO -