

PRODUCT FEATURES



Product range: Castel AIRCO
Product category: DRAINAGE
Product group: CCSR

Commercial ref.: CCSR

Description:
Condensation connection soft - rigid

Article code:

0514.00001.022 - Cond. Connect. SOFT-RIGID CCSR16 Yellow
0514.00002.022 - Cond. Connect. SOFT-RIGID CCSR18 Red
0514.00003.022 - Cond. Connect. SOFT-RIGID CCSR20 Blue
0514.00004.022 - Cond. Connect. SOFT-RIGID CCSR25 Green
0514.00005.022 - Cond. Connect. SOFT-RIGID CCSR32 gray
0514.00006.022 - Cond. Connect. SOFT-RIGID CCSR40 Ivory

APPLICATION

The CCSR connects



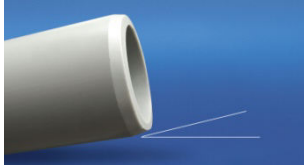
- the OEM rigid adapter part of the OEM drainage hose that exits from an indoor air conditioning split unit
- or it connects a rigid drain pipe into a drainage hose (for air conditioning condensation water exhaust only)

MATERIAL

Soft part: thermoplastic elastomer

Rigid part: ASA (Acrylonitril – Styrene – Acrylonitril)

RECOMMENDATIONS

<p>We recommend in all installations the use of hose clamps on both ends of the CCSR to avoid any leakage.</p> <p>Do not “overtighten” the hose clamp in order not to damage neither the CCSR nor the pipes and hoses connected by the CCSR.</p>	
<p>Whenever possible it is recommended to use the CCSR in a vertical position, soft part up, rigid part down</p> <p>It is not recommendable to connect a flexible hose to the soft part of the CCSR as it may lead to possible leakages.</p>	
<p>In case in connection with a rigid drain pipe, the rigid drain pipe should be bevelled before inserting it into the soft part of the CCSR.</p>	

ADVISING WORKING TEMPERATURES

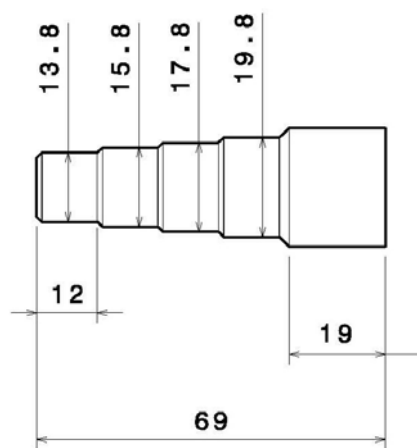
Range of working temperatures is between +0°C and +60°C.

To avoid possible damage to the CCSR and the installation, negative temperatures are not tolerated.

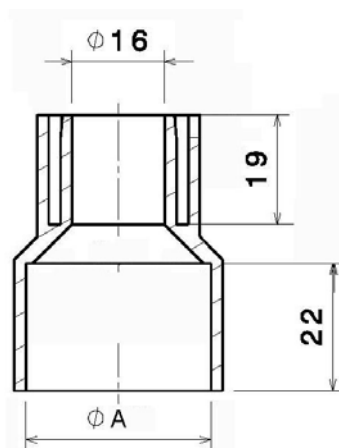
TECHNICAL DRAWING

All measurements in mm

Ref.	A
CCSR.16	16 mm
CCSR.18	18 mm
CCSR.20	20 mm
CCSR.25	25 mm
CCSR.32	32 mm

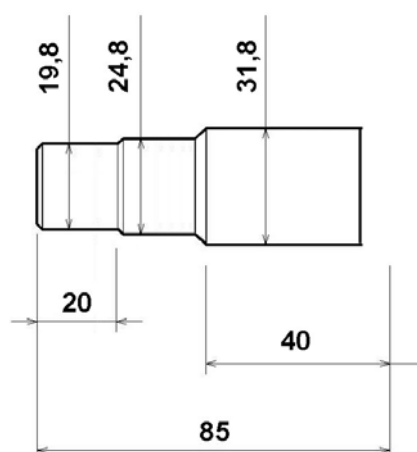


Detailed view of the rigid part

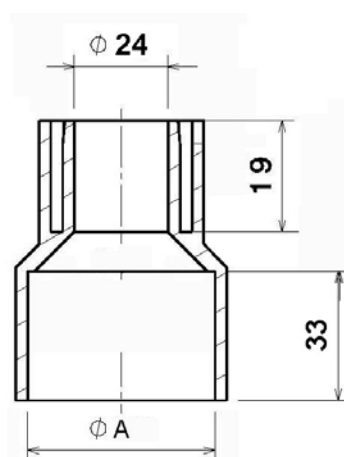


Detailed view of the soft part

Ref.	A
CCSR.40	40 mm



Detailed view of the rigid part



Detailed view of the soft part

ATTACHMENTS:

none

Castel Engineering, Rue de la Royenne 84, B-7700 Mouscron, Tel +32 (0) 56 85 20 21

Copyright © 2009 Castel Engineering – All rights reserved.

The data in this document correspond to the results noticed in lab conditions without safety factor.

Compliance with local regulations, safety factors, wall structures and adequate choice of models are totally beyond our control. It's the sole responsibility of the **qualified** installer to use appropriate material according to the professional know-how, in respect with all regulations in application at the location of installation.

We have to suppose that the structure to which the ceiling suspension system will be attached is resistant enough. That this is totally out of our control as we are in a simple sale – purchase transaction.

It is the full responsibility of the **qualified** buyer and **qualified** installer of the suspension products to ensure that the structure to which they will attach them is resistant enough in compliance with the norms and regulations in application.

Those who in any way utilize the product(s) are solely responsible for determining (a) the suitability of the product for the intended use, (b) the appropriate manner of processing and maintaining the product to ensure safety and quality, (c) chemical, physical and health effects related to those activities and (d) to inform themselves in order to be able to decide if supplementary tests are necessary for their intended use according to norms and regulations in application at the location of their intended use.

Castel Engineering and its Affiliates disclaim any and all responsibility and liability for the use of any such data, information and/or the relevant product.