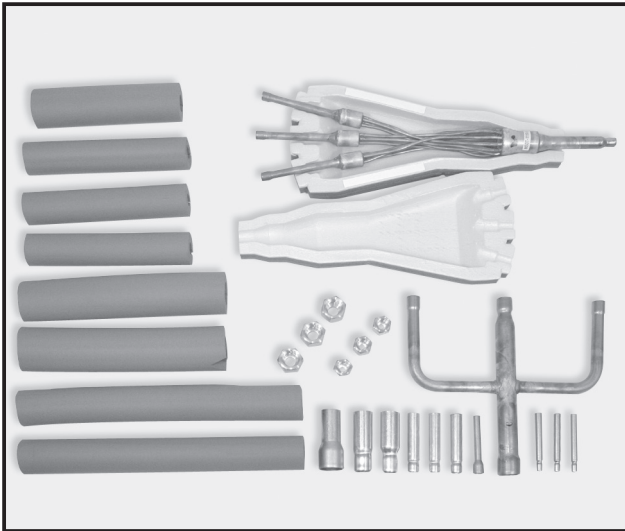


Photo



Descriptions

3-branch pipe for Multi-System Triple use. (33:33:33)

Applicable Models

- PUAH-ZRP100/125/140VKA3 ■ PUAH-ZRP100/125/140YKA3
 - PUAH-ZRP200/250YKA3
 - PUAH-P140VKA ■ PUAH-P140YKA
 - PUAH-P200/250YKA3
- [R410A type] for 33:33:33 Triple use

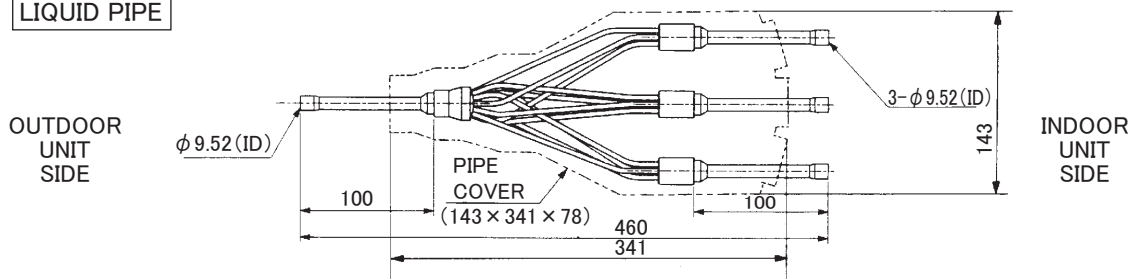
Specifications

Main body	Distribution ratio	Outdoor unit capacity is divided into three (33:33:33)
	Number of distribution pipes	1 each for liquid pipe and gas pipe
	Pipe material	Phosphate deoxidized copper C1220T-OL (JIS H3300)
Accessory	Pipe cover	Polyethylene foam molding (for liquid pipe) EPT sponge rubber type (for gas pipe)
	Joint	13 joints (7 types)

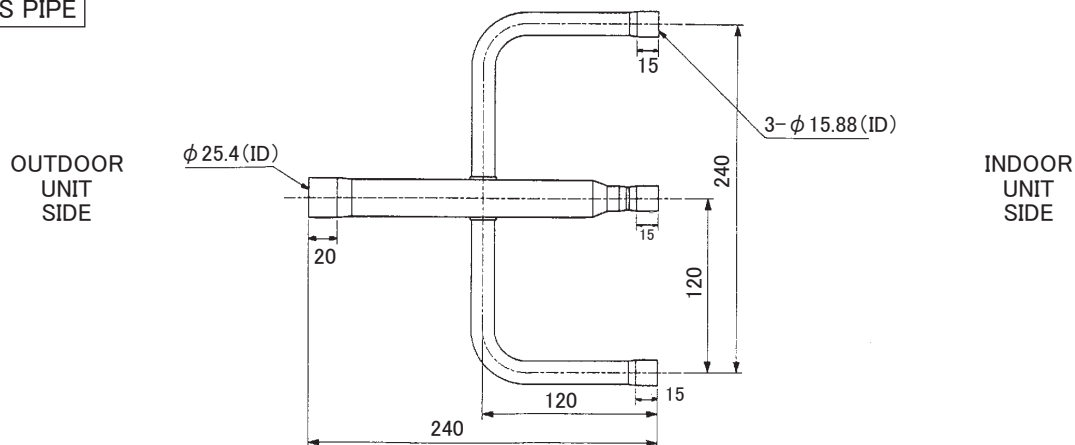
Dimensions

Unit: mm

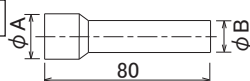
LIQUID PIPE



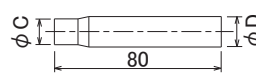
GAS PIPE



JOINT(Accessary)



ØA(ID)	ØB(OD)	Amount
12.7	9.52	1
28.6	25.4	1



ØC(ID)	ØD(OD)	Amount
12.7	15.88	3
19.05	25.4	1
6.35	9.52	3
15.88	25.4	1
9.52	15.88	3

OPTIONAL
PARTS

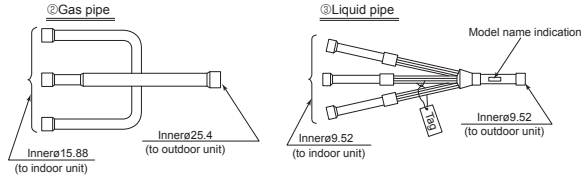
How to Use / How to Install

Package Air-conditioner Optional Parts Instruction Sheet for Simultaneous Triple Distributing Pipe exclusively used with Free Compo Multi-Units

Make sure that you have all the following parts in packing box before beginning installation:

① Instruction sheet	② Gas pipe	③ Liquid pipe	④ Pipe cover (for gas pipe)	⑤⑥ Pipe covers (for gas pipe)	⑦ Pipe cover (for liquid pipe)	⑧⑨ Pipe covers	⑩ Bands	⑪ Joint	⑫ Flare nut
This sheet 1 sheet	1pc	1pc	1pc	⑤ Outerø250×250-1pc ⑥ Outerø43×350-2pc	2pcs	⑧ Outerø242×180-1pc ⑨ Outerø38×200-3pcs	8pcs	See Table 1.	⑫ 1/4F.....3pcs ⑫ 1/2F.....3pcs For R410A indoor unit.

• See the following for the specifications of gas pipe ② and liquid pipe ③ :



Note:
The following items must be obtained locally in addition to the packed parts.
⑩ Heat insulating sealing tape
⑬ Extension pipe for refrigerant pipe

Joint specifications and provided numbers <Table 1>

Sizes of joint pipe ends (mm)	Numbers provided
④ Outerø9.52-Innerø6.35	3
④ Outerø9.52-Innerø12.7	1
④ Outerø15.88-Innerø12.7	3
④ Outerø25.4-Innerø19.05	1
④ Outerø25.4-Innerø15.88	1
④ Outerø25.4-Innerø28.6	1
④ Outerø15.88-Innerø9.52	3

Pipe size and limit to refrigerant pipe

■ For R407C fixed speed <Table 2-1>

Outdoor unit capacity	Pipe size (mm)				Actual pipe length (m)			Difference of elevation (m)		Note 1 Number of bends
	Gas pipe side		Liquid pipe side		Indoor-Outdoor	A+B+C+D=	Indoor-Indoor	Indoor-Outdoor	Indoor-Indoor	
P6, 140	ø19.05 <3/4>	ø15.88 <5/8>	ø9.52 <3/8>	ø9.52 <3/8>	-	50m or less	B-C = B-D = C-D = 8m or less	H = 40m or less	h = 1m or less	15 or less
P8, 200	ø25.4 <1>		ø12.7 <1/2>		A+B = A+C = A+D = 50m or less	70m or less				
P10, 250	ø28.6 <1-1/8>		ø12.7 <1/2>							

■ For R410A power inverter <Table 2-2>

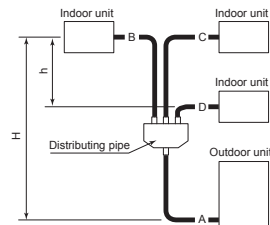
Outdoor unit capacity	Pipe size (mm)				Actual pipe length (m)			Difference of elevation (m)		Note 1 Number of bends
	Gas pipe side		Liquid pipe side		Indoor-Outdoor	A+B+C+D=	Indoor-Indoor	Indoor-Outdoor	Indoor-Indoor	
RP6, 140	ø15.88 <5/8>	ø15.88 <5/8>	ø9.52 <3/8>	ø6.35 <1/4>	-	75m or less	B-C = 8m or less	H = 30m or less	h = 1m or less	15 or less
RP8, 200	ø25.4 <1>		ø9.52 <3/8>		A+B = A+C = A+D = 80m or less	80m or less				
RP10, 250	ø28.6 <1-1/8>		ø12.7 <1/2>							

■ For R410A inverter <Table 2-3>

Outdoor unit capacity	Pipe size (mm)				Actual pipe length (m)			Difference of elevation (m)		Note 1 Number of bends
	Gas pipe side		Liquid pipe side		Indoor-Outdoor	A+B+C+D=	Indoor-Indoor	Indoor-Outdoor	Indoor-Indoor	
ZRP100	ø15.88 <5/8>	ø12.7 <1/2>	ø9.52 <3/8>	ø6.35 <1/4>	-	75m or less	B-C = 8m or less	H = 30m or less	h = 1m or less	15 or less
(ZRP)P125, 140			ø9.52 <3/8>							
(ZRP)P200			ø12.7 <1/2>		A+B = A+C = A+D = 100m or less	100m or less				
(ZRP)P250	ø25.4 <1>	ø15.88 <5/8>	ø9.52 <3/8>	ø9.52 <3/8>						

Note 1: Limit the number of bends for refrigerant pipes to 8 in each of the <A+B>, <A+C> and <A+D> ranges.
• See the installation manual provided with the main unit for details on charge-less pipe length and refrigerant additional charge amount.

<Fig. 1>



Pipe connections

- Perform work, taking care with the following:
 - Be sure to check the combination pattern of indoor and outdoor units, joints to be used <Table 3-1 or 3-2>, pipe size <Table 1> and joint ⑪.
 - Be sure to observe the limits to refrigerant pipe length and number of bends <Table 2>.
 - Insert the refrigerant pipe (procured at local site) and joint ⑪ into the expanded pipe portions of distributing pipe (this product) until they stop, and then connect them using anti-oxidization soldering.
 - There is no restriction on the orientation of distributing pipe (this product) during installation.
 - Take care that no foreign object, such as dust, enters during pipe connecting work.
 - Remove the tag of liquid pipe ③ after checking it.
- Pipe connections
 - The provided joints ⑪ will be necessary depending on the capability of model used: See <Table 3>, and connect the refrigerant piping.
 - Do not bend or widen the distributing pipe (liquid pipe).

Combination pattern of indoor and outdoor units and joints to be used:

■ For R407C fixed speed <Table 3-1>

Outdoor unit	Indoor unit	Joint to be used
P6, 140	2+2+2, 50+50+50	⑪ Outerø25.4-innerø19.05[outdoor gas pipe side]×1, ⑫ Outerø15.88-innerø12.7×3[indoor gas pipe side]
P8, 200	2.5+2.5+2.5, 60+60+60	⑪ Outerø9.52-innerø12.7[indoor gas pipe side]×3
P10, 250	3+3+3, 71+71+71	⑪ Outerø25.4-innerø28.6[outdoor gas pipe side]×1

■ For R410A power inverter <Table 3-2>

Outdoor unit	Indoor unit	Joint to be used
PR6, 140	2+2+2, 50+50+50	⑪ Outerø25.4-innerø15.88[outdoor gas pipe side]×1, ⑫ Outerø15.88-innerø12.7[indoor gas pipe side]×3, ⑬ Outerø9.52-innerø6.35[indoor gas pipe side]×3
PR8, 200	2.5+2.5+2.5, 60+60+60	No joint is necessary
PR10, 250	3+3+3, 71+71+71	⑪ Outerø9.52-innerø12.7[outdoor liquid pipe side]×1, ⑫ Outerø25.4-innerø28.6[outdoor gas pipe side]×1

■ For R410A inverter <Table 3-3>

Outdoor unit	Indoor unit	Joint to be used
ZRP100	35+35+35	⑪ Outerø25.4-innerø15.88[outdoor gas pipe side]×1, ⑫ Outerø15.88-innerø9.52[indoor gas pipe side]×3, ⑬ Outerø9.52-innerø6.35[indoor liquid pipe side]×3
(ZRP)P125, 140	50+50+50	⑪ Outerø25.4-innerø15.88[outdoor gas pipe side]×1, ⑫ Outerø15.88-innerø12.7[indoor gas pipe side]×3, ⑬ Outerø9.52-innerø6.35[indoor liquid pipe side]×3
(ZRP)P200	60+60+60	No joint is necessary
(ZRP)P250	71+71+71	⑪ Outerø9.52-innerø12.7[outdoor liquid pipe side]×1

Note 1: Installation positions in brackets [].